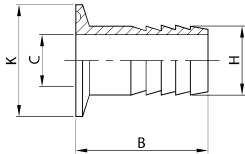




PORTAGOMMA E. SM.  
HOSE ADAPTOR E. FR.  
PORTE CAOUTCH. B. FR.  
M. MANGUERA E. SM.

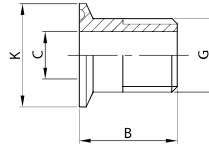
**K14 RHA**



DN	B	C	H	K	gr
1/2" 12	38,1	9,5	13,7	25,0	26
3/4" 19	38,1	15,7	21,3	25,0	40
1" 25	42,9	20,6	25,4	50,5	70
1 1/2" 38	42,9	33,3	38,1	50,5	140
2" 51	58,7	46,0	50,8	64,0	250
2 1/2" 63	59,5	58,7	63,5	77,5	370
3" 76	78,6	72,0	76,2	91,0	505
4" 101	86,5	97,4	101,6	119,0	685

SEMIRACCORDO EF. GAS  
BSP ADAPTOR  
FERRULE BF. GAZ  
ENLACE ROSCA GAS

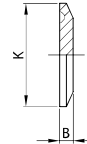
**K14 BSPM**



DN	B	C	G	K	gr
1" 25	30,0	21,7	1"	50,5	70
1 1/2" 38	32,0	34,4	1 1/2"	50,5	140
2" 51	36,0	47,1	2"	64,0	250
2 1/2" 63	39,0	59,8	2 1/2"	77,5	370
3" 76	46,0	72,5	3"	91,0	505
4" 101	56,0	96,7	4"	119,0	685

TAPPO  
SOLID END CAP  
BOUCHON  
TAPÓN

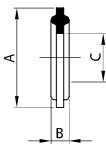
**K16**



DN	B	K	gr
1/2" 12	4,7	25,0	16
3/4" 19	4,7	25,0	16
1" 25	6,4	50,5	70
1 1/2" 38	6,4	50,5	70
2" 51	6,4	64,0	140
2 1/2" 63	6,4	77,5	200
3" 76	6,4	91,0	410
4" 101	7,9	119,0	570
5" 127	11,0	144,4	1.400
6" 152	13,0	166,0	2.200
8" 203	13,0	217,0	3.700

GUARNIZIONE  
GASKET  
JOINT  
JUNTA

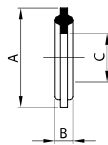
**K40**



DN	A	B	C
1/2" 12	21,8	4,5	10,0
3/4" 19	21,8	4,5	16,5
1" 25	50,5	5,3	23,2
1 1/2" 38	50,5	5,3	36,2
2" 51	64,0	5,3	49,2
2 1/2" 63	77,5	5,3	60,5
3" 76	91,0	5,3	73,1
4" 101	119,0	5,3	97,6
4" 104	119,0	5,3	100,0
5" 127	144,4	5,3	121,0
6" 152	166,0	5,3	146,4
8" 203	217,0	5,3	194,2

GUARNIZIONE A BUSTA  
ENVELOPE GASKET  
JOINT À ENVELOPE  
JUNTA DE SOBRE

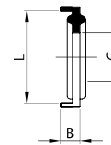
**K40 TE**



DN	A	B	C
1" 25	50,5	5,3	23,2
1 1/2" 38	50,5	5,3	36,2
2" 51	64,0	5,3	49,2
2 1/2" 63	77,5	5,3	60,5
3" 76	91,0	5,3	73,1
4" 101	119,0	5,3	97,6
4" 104	119,0	5,3	100,0

GUARNIZIONE A LABBRO  
LIP GASKET  
JOINT À LÈVRE  
JUNTA DE REBORDE

**K39**



DN	B	C	L
1" 25	4,5	23,2	50,5
1 1/2" 38	4,5	36,2	50,5
2" 51	4,5	49,2	64,0
2 1/2" 63	4,5	60,5	77,5
3" 76	4,5	73,1	91,0
4" 101	4,5	97,6	119,0
4" 104	4,5	100,0	119,0
5" 127	4,5	124,2	144,4
6" 152	4,5	147,5	166,8
8" 203	4,5	198,2	218,0